

OUR MISSION

Our mission is to assist and support people with disabilities to enhance the quality of their lives through increased independence in work and leisure activities.

OUR CORE VALUES



INDIVIDUALS MATTER

Every individual deserves to be given dignity and respect.



IT'S POSSIBLE

Anything can be accomplished through teamwork and innovation.



ADD VALUE

Do better. Do more. We believe that when we can, we should.

Work Training Center Programs and Services

ADULT DAY PROGRAMS

Mosaic Chico

2952 Esplanade, Ste. 100

Nexus Oroville

2075 Baldwin Avenue

Nexus Chico

2201 Pillsbury Road, #142

COMMUNITY PROGRAMS

Independent Living Skills, Group Social Recreation, Self-Determination Program

EMPLOYMENT SERVICES

Career Exploration, Job Development, Benefits Planning, Transportation Training, Paid Internships, Job Coaching

☎ (530) 924-2340 ✉ info@ewtc.org

📍 460 W East Avenue, Ste. 110
Chico, CA 95926

🌐 wtcinc.org



Scan
to connect!



GROUP SOCIAL RECREATION (GSR)

Step into a life
of connection,
discovery and Joy!

For more information, please contact:

Client Services Department
(530) 924-2340
info@ewtc.org



Where New Adventures Begin!



Group Social Recreation (GSR) is a community-based program designed for adults (18+) with developmental or intellectual disabilities. We create inclusive opportunities for building friendships, participating in exciting outings, attending monthly events and activities, and increasing confidence—all while having fun.

Your Week, Your Way...

Our team of experienced Direct Support Professionals (DSPs) supports each participant in planning and enjoying engaging activities based on their interests. Whether you're outgoing or just starting to explore social opportunities, GSR is a supportive place to grow.



Exciting experiences!

Let's Make Some Plans!

Some Weekly Activities might include:

- Bingo, Karaoke, and game socials
- Strolling local markets or attending community events
- Food and movie outings
- Park adventures and fitness fun
- Arts, museums, and live music
- Out-of-town day trips, (i.e., A's baseball games, Turtle Bay, Old Town Sacramento, amusement parks, etc)

Activities change regularly based on what you love to do!

What You'll Gain from GSR

Friendships & Belonging Build real connections and feel part of a community.

Confidence & Independence Grow your self-esteem while exploring new places.

Social Skills Practice communication and teamwork in fun settings.

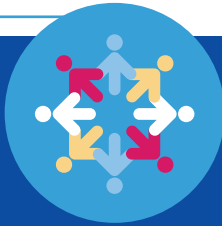
Wellness Stay active and healthy through recreation and group activities.

Joy Most of all, enjoy exciting experiences that make life richer!

How It All Works

- Small group sizes for personalized attention
- Transportation to and from outings is provided
- Flexible schedules to meet your needs
- Referral required through Far
- Northern Regional Center (FNRC)

Who's a Great Fit?



- ✓ Be 18 years of age or older
- ✓ Have a developmental or intellectual disability and eligible for Far Northern Regional Center (FNRC) services
- ✓ Obtain a referral through their FNRC Service Coordinator
- ✓ Able to function in a group setting, typically with a staff-to-client ratio of 1:2 or 1:3, and occasionally in a larger group with a maximum staff-to-client ratio of 1:10 for special events and activities
- ✓ Be independent with your basic needs (ADLs).
- ✓ Be willing to participate in group-based social and recreational activities
- ✓ Commit to regular attendance ideally with no more than one unplanned cancellation per month
- ✓ Ready to meet new people, explore new places, try new things, and have fun!

